

# MONTANA'S WILDLIFE MITIGATION SETTLEMENT

- **How We Got Here**
- **Types of Projects**
- **Accomplishments to Date**
- **Future Priorities**

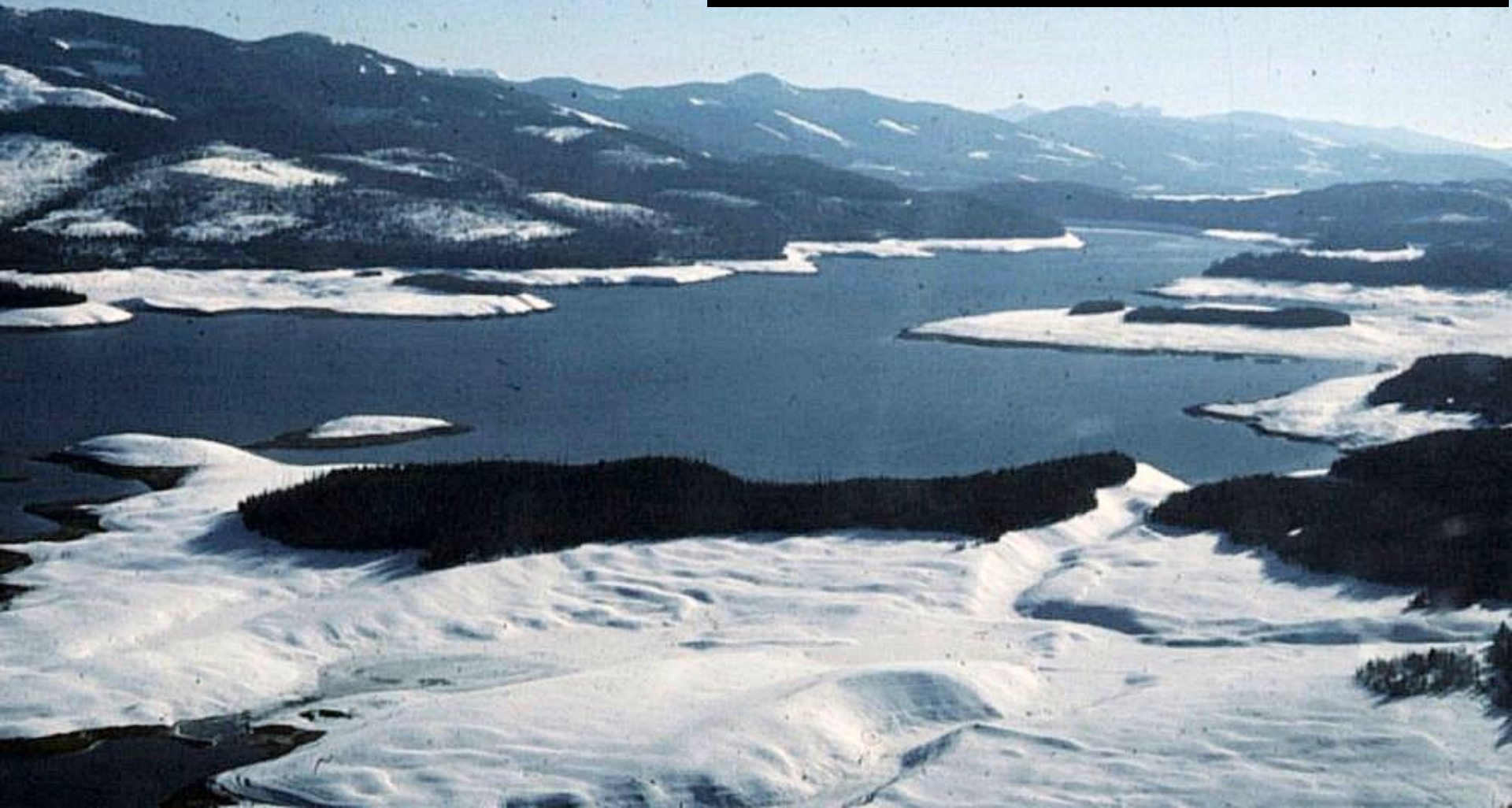
Alan Wood, Wildlife Program Manager

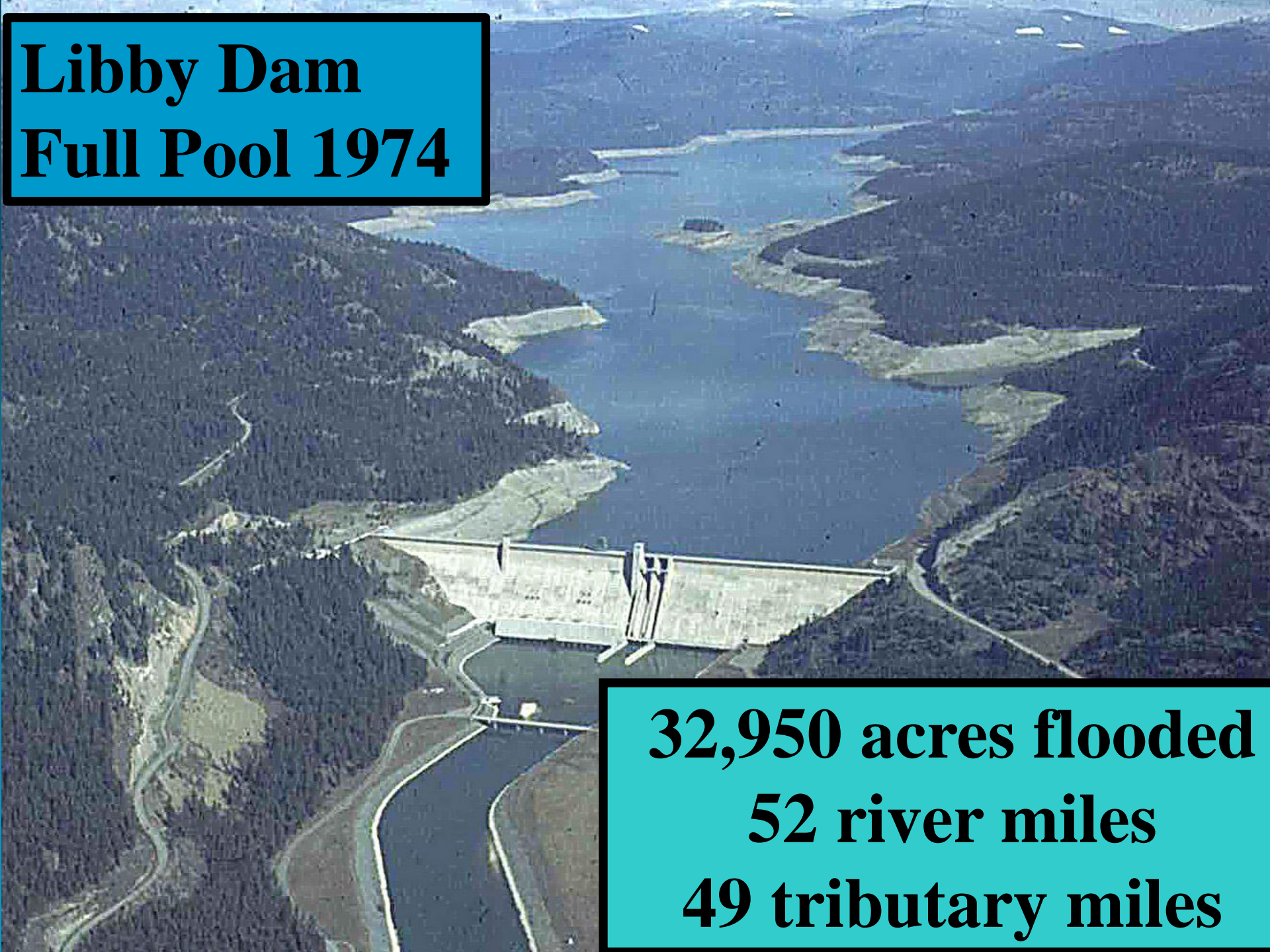


*Montana Fish,  
Wildlife & Parks*

**Hungry Horse Dam  
Full Pool 1954**

**23,750 acres flooded  
35 miles of SF Flathead  
43 miles of tributary**



An aerial photograph of the Libby Dam, a large concrete structure with a central spillway, situated in a valley. The dam is surrounded by dense evergreen forests. The reservoir behind the dam is a large, winding body of water that fills the valley and extends into the surrounding hills, creating a complex network of waterways. The water is a deep blue color, contrasting with the dark green of the trees. The overall scene is a vast, natural landscape transformed by human engineering.

**Libby Dam**  
**Full Pool 1974**

**32,950 acres flooded**  
**52 river miles**  
**49 tributary miles**

# 1980 Act

---

## Pacific Northwest Electric Power Planning and Conservation Act

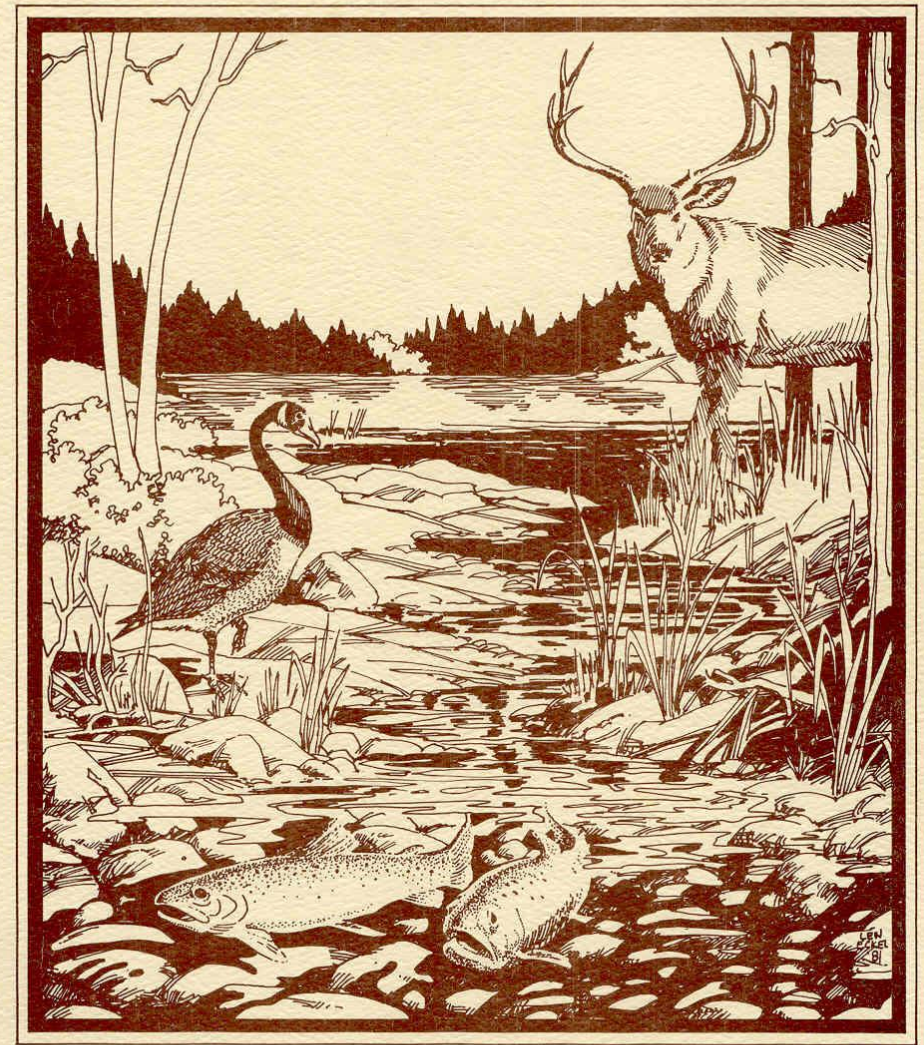


**1981  
Recommendations**

**Prepared By:  
MT FWP &  
CSKT**

**Committee:  
BIA, MPC, PP&L,  
BOR, ACOE,  
USFWS, WMTG&T**

**MONTANA**  
Recommendations For Fish & Wildlife Program



Submitted To  
Pacific Northwest Electric Power And Conservation Planning Council

# 1984 Loss Statement

**MFWP Finalized  
losses for:**

**Hungry Horse**

**Libby**

**Noxon Rapids**

**Cabinet Gorge**



# 1985 Plan

## MFWP Finalized Mitigation Plans:

### Hungry Horse

### Libby

**Proposed to mitigate  
for 100% of C&I  
losses**

WILDLIFE AND WILDLIFE HABITAT

MITIGATION PLAN FOR HUNGRY HORSE HYDROELECTRIC PROJECT

(Revised)  
August, 1985



Prepared by

Montana Department of Fish, Wildlife and Parks

Gael N. Bissell - Wildlife Biologist  
Chris A. Yde - Wildlife Biologist

Funded by

Bonneville Power Administration  
Project No. 83-464

# 1986 MT Proposal to NPCC

**MT – Costs @ \$40-\$75 Million**

**PNUCC – Costs Unreasonable**

**Council – Negotiate Agreement?**





# 1986 Montana Negotiations

---

## PARTICIPANTS

MFWP, BPA, NPPC, USFWS, GNP

ACOE (N Pacific Div. & Seattle Dist.

USFS (FNF & KNF)

PNUCC (WMG&T, MPC CFAC)

TNC, FLT

# 1986 Joint Recommendations

---

**FWP and PNUCC jointly submit the Montana wildlife mitigation plan**

Plan covers deer, elk, sheep, grizzly bear, bald eagle, CSTG, otter, marten/OG, waterfowl

Propose a trust fund  $\leq$  \$16 million

# 1987 Program

**Council Adopts  
modified plans**

**Hydropower  
allocation**

**Can't approve  
trust fund  
approach, but  
supported  
concept**



*A debt to the past ...  
an investment in the future.*

**COLUMBIA  
RIVER BASIN  
FISH AND  
WILDLIFE  
PROGRAM**

**NORTHWEST POWER PLANNING COUNCIL**

# 1988 Settlement



## **WILDLIFE MITIGATION AGREEMENT FOR LIBBY AND HUNGRY HORSE DAMS**

between the

**BONNEVILLE POWER  
ADMINISTRATION**

and the

**STATE OF MONTANA**

**December 21, 1988**

# 1988 Settlement

**C&I losses in 1984 loss statements**

**Term of 60 years**

**\$12.5 million to MT >\$8 M 30 yrs**

**Mitigation to MT**

**Limited indemnity to BPA**

**1-to-1 crediting**

**Wildlife Mitigation Advisory Comm.**

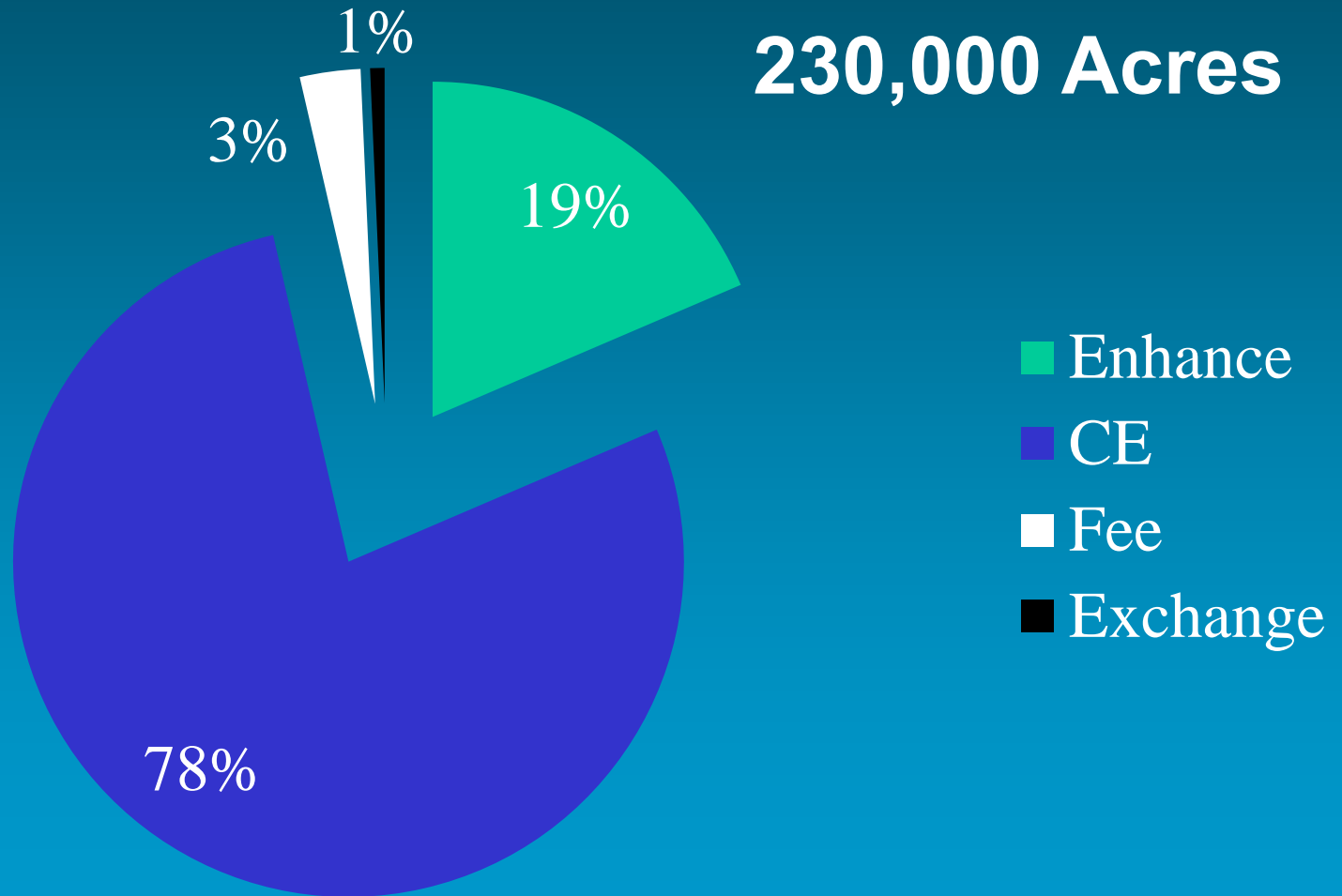


# 1988 Settlement

## Wildlife Mitigation Advisory Committee

Members to Include	
MFWP	BPA
NPCC	PNUCC
USFWS	CSKT
USFS	WMG&T
MECA	BOR
ACOE	Others?

# Types of Projects



# Conservation Easements

---

4 Projects

159,800 Acres

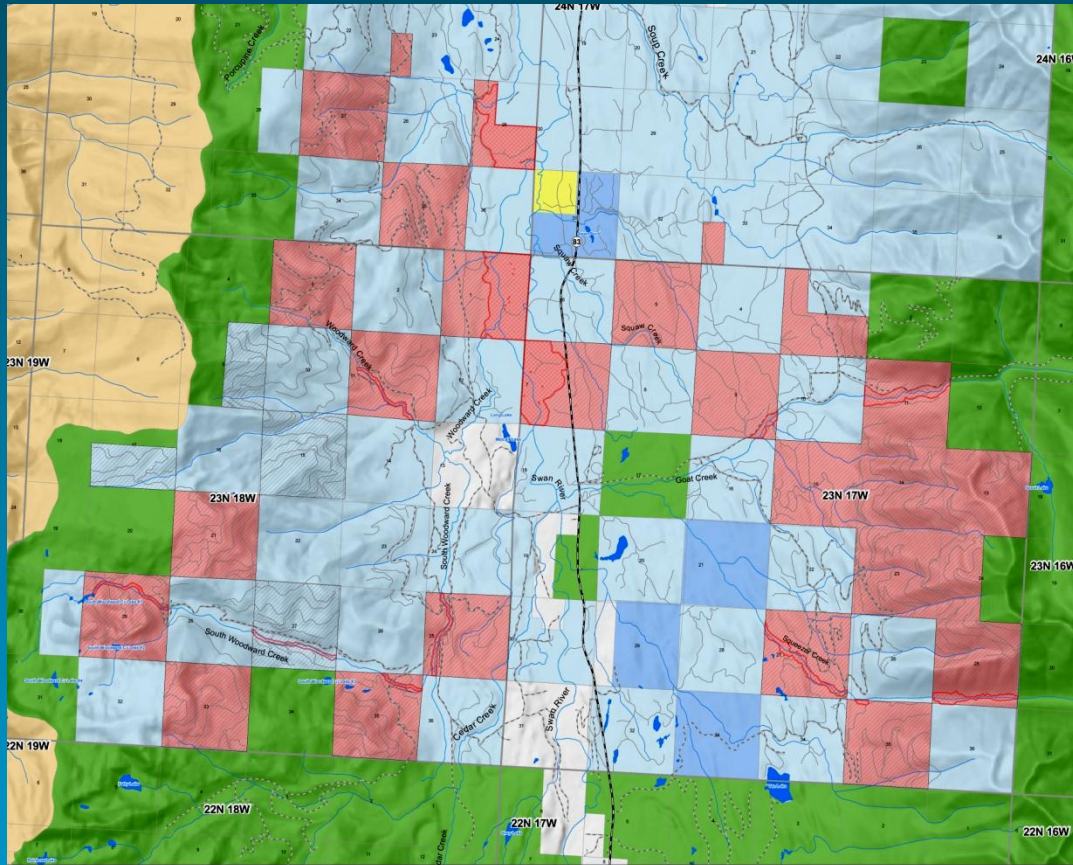
\$6.2 Million (\$39/ac)





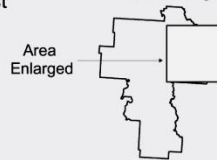
# Swan Valley CE

16,500 Acres



- Riparian Exclusion Area
- FWP Easements
- TNC-Future MT FWP
- Tribal and BIA Lands
- MT FWP
- State Trust
- TNC
- USFS
- USFWS

Lake County



Montana Fish, Wildlife & Parks





# Habitat Enhancements

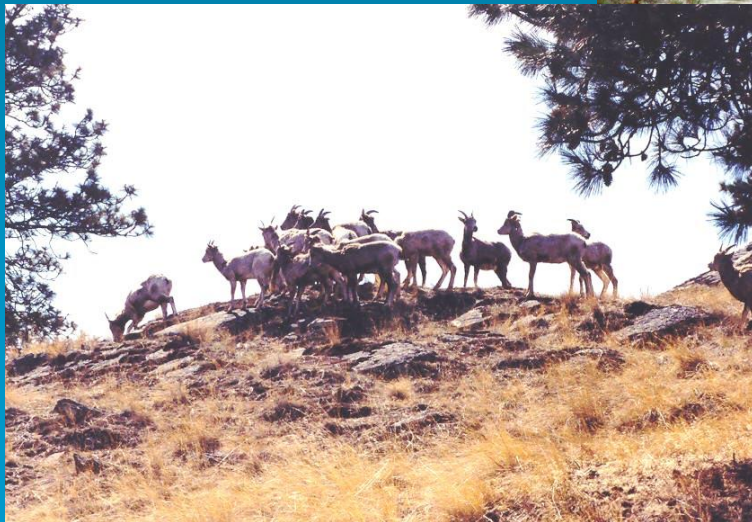
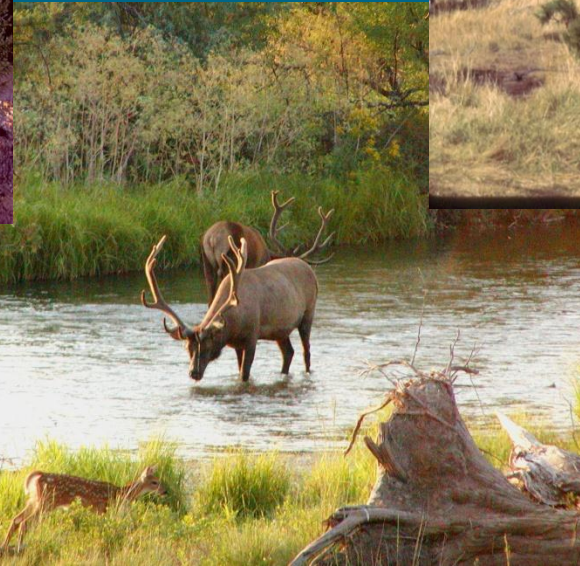
21 Projects

41,000 Acres

\$1.9 Million (\$46/ac)



# Example: Enhancing Big Game Winter Ranges



# Habitat Acquisitions

15 Projects  
(4 pre-trust fund)

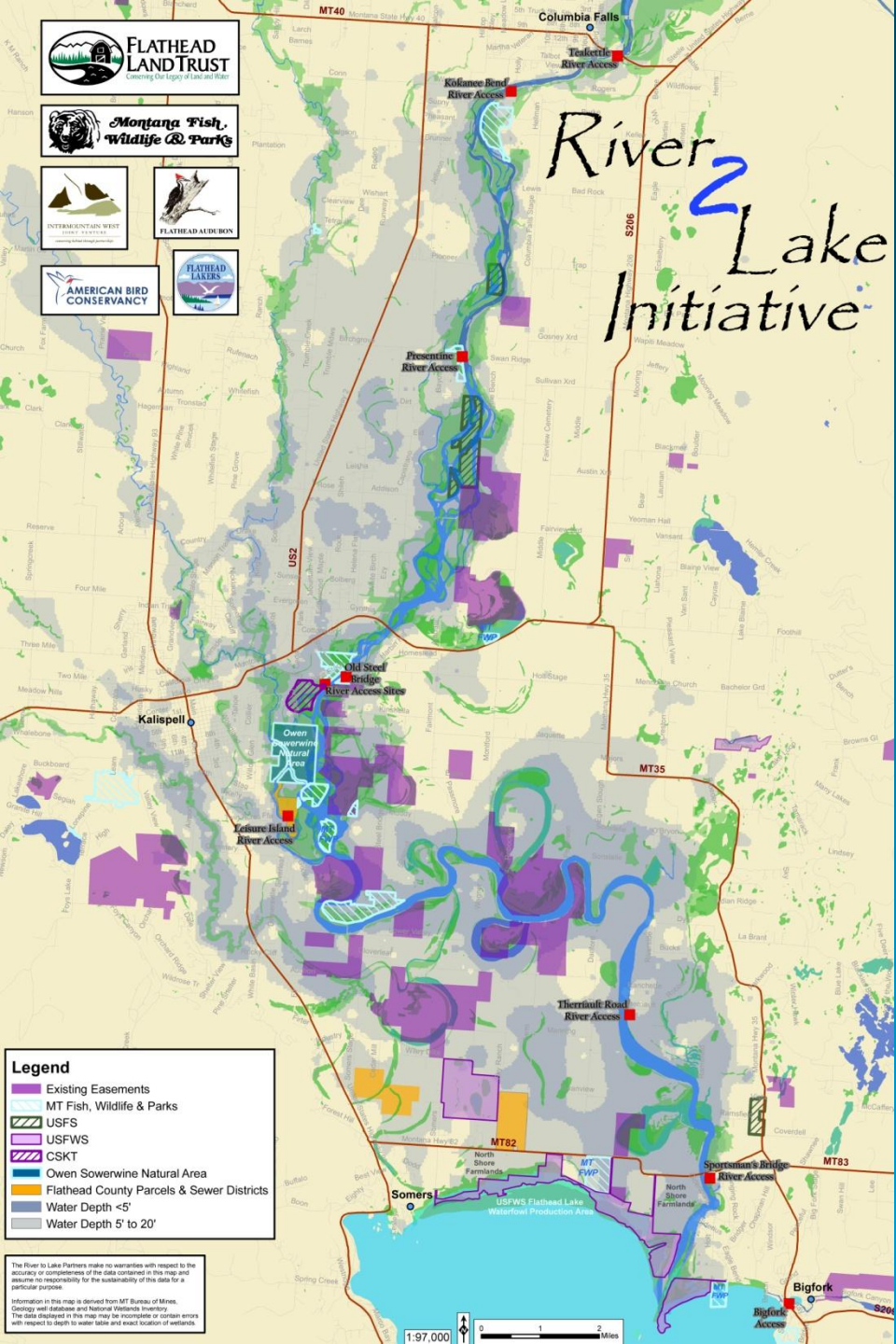
6,900 Acres

\$2.5 Million (\$370/ac)





# River-2-Lake Initiative



# Land Exchange



2 Projects

1,524 Acres

\$172,462 (\$113/ac)

# Land Trust Partnerships



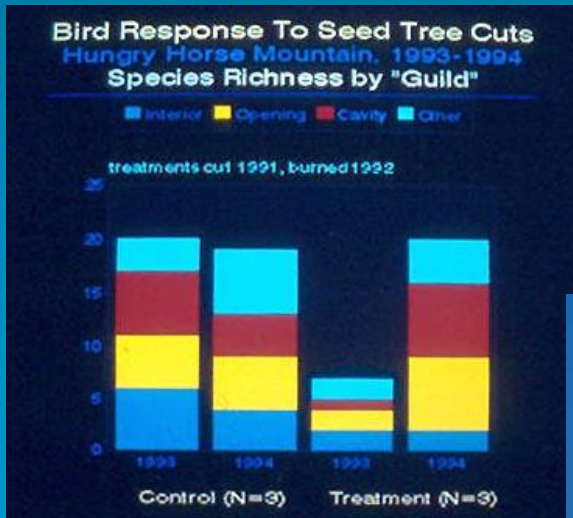
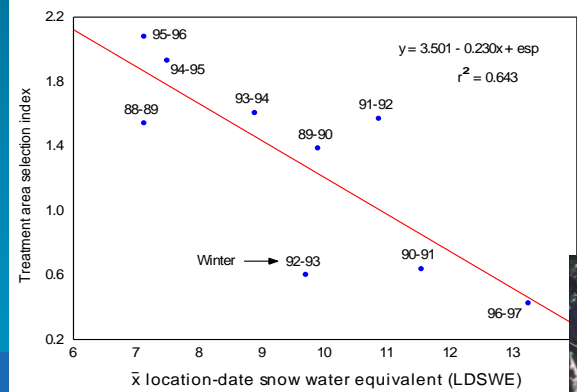
104 Conservation Easements

21,100 Acres

\$568,300 (\$28/ac)



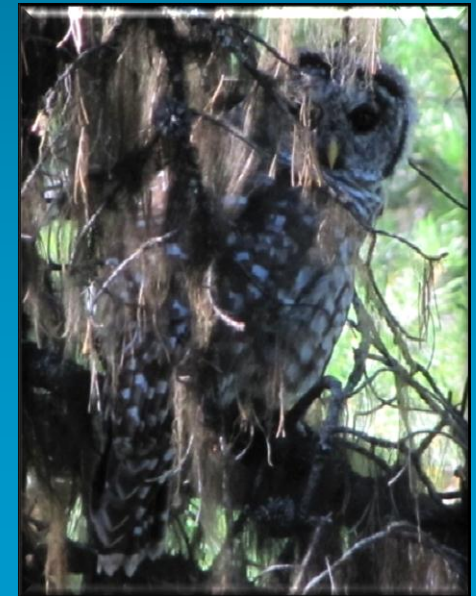
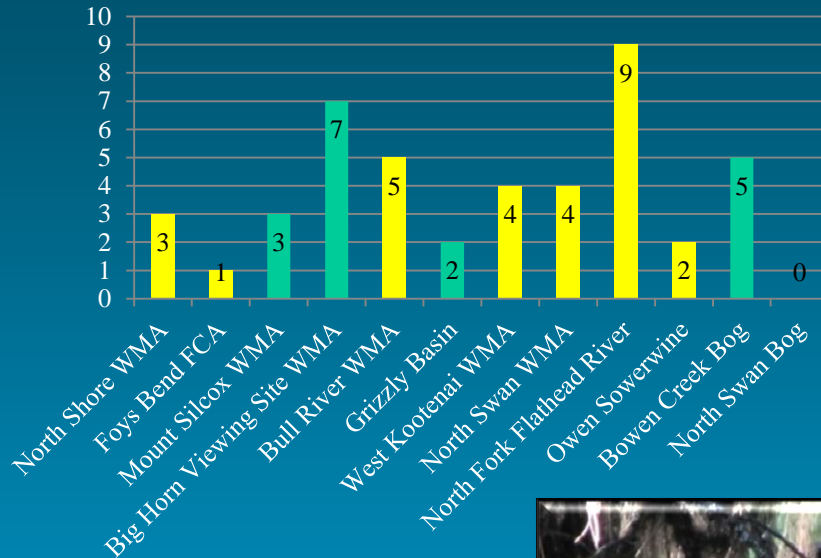
# Past Monitoring



# Ongoing Monitoring

- Weed Management
- Grazing Easements
- Wildlife Inventory
- Restoration
- Management Plans

Species Richness



# Accomplishments

Habitat Unit	Total Losses		Project Acres
	Hydro	Full	
Riparian/Wetland	14,488	18,600	18,973
Palouse Prairie & Ag	1,251	1,583	7,865
Upland Forest	27,953	36,022	203,646
<b>Total</b>	<b>43,692</b>	<b>56,205</b>	<b>230,484</b>

# Current Montana Program



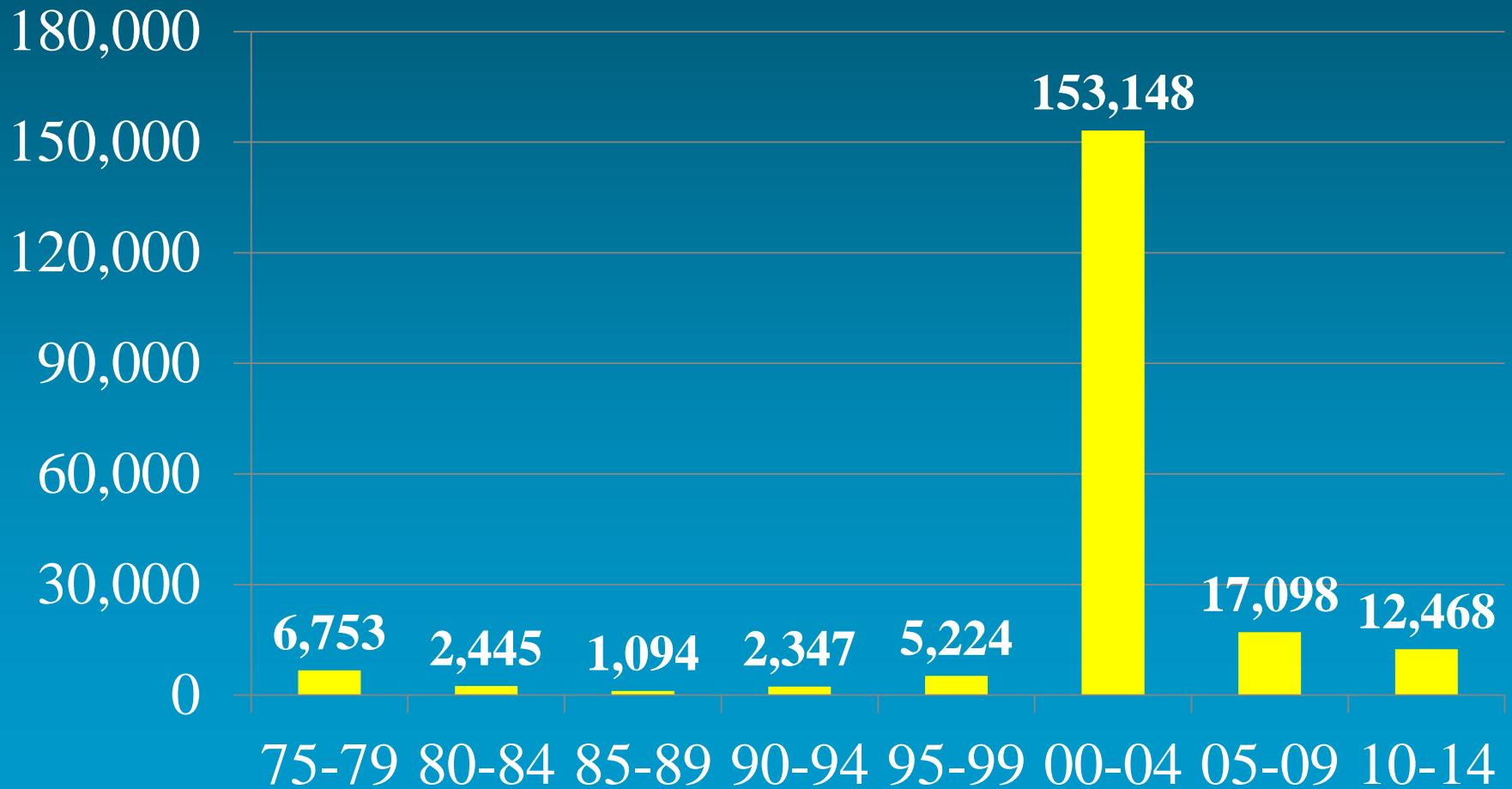
We have mitigated C&I losses:

Maintain past projects

Additional partnerships to benefit

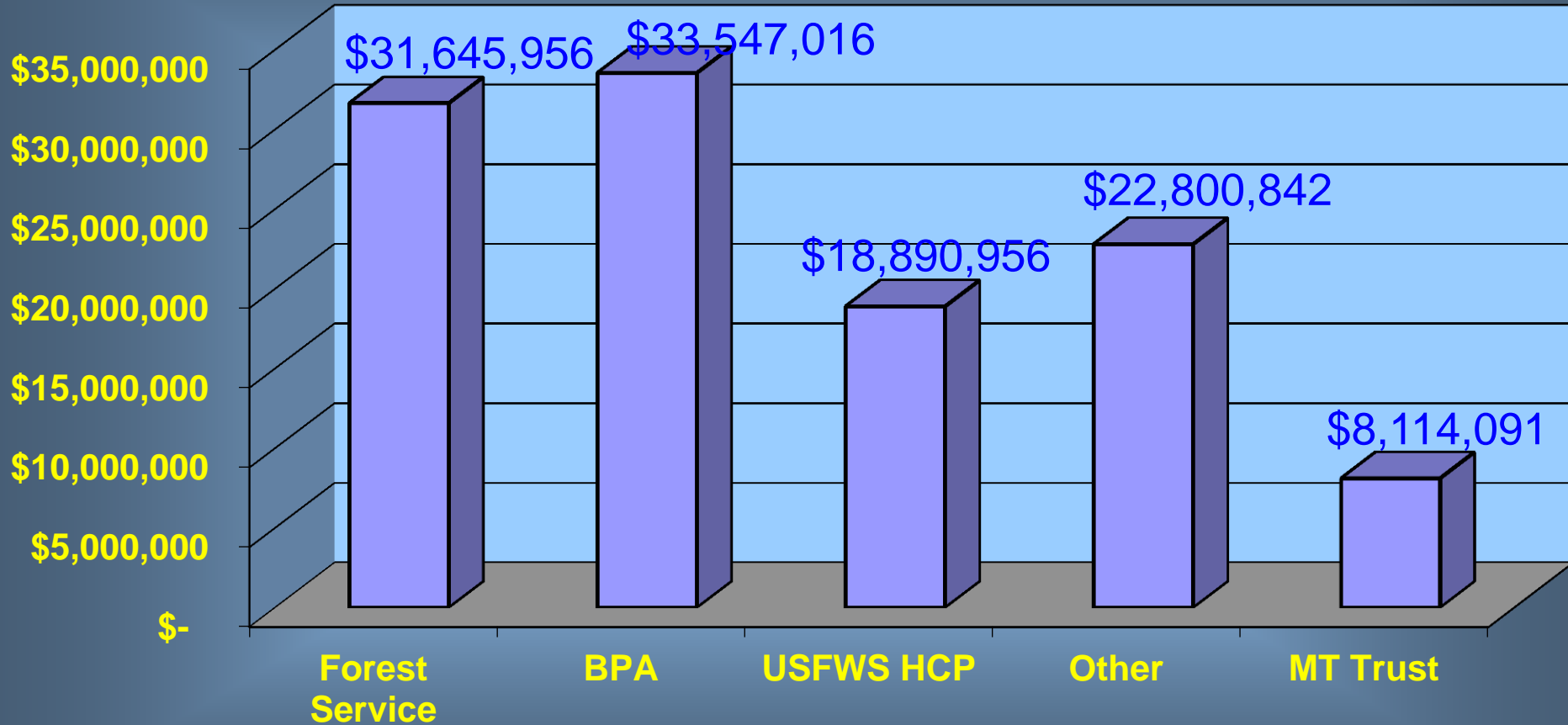
<b>Wetlands</b>	<b>Bighorn Sheep</b>
<b>Furbearers</b>	<b>Grizzly Bears</b>
<b>Grasslands/Columbian Sharptails</b>	

# Implementation



# Funding Partners

**\$115 Million**



# Summary



Trust Fund was a calculated risk  
But it worked  
Provides ongoing O&M funding  
Continued partnership opportunities



# Where Do We Go From Here?

---





# Continued Partnerships & O/M



# Kootenai River Operational Impacts



**Kootenai Tribe of Idaho.**

**and**



**Montana Fish Wildlife &  
Parks**

Funding provided by

